

TEAM 東日本大震災

Manami Otani Nanami Ito

Youth summit 2012

gym at the elementary school



a lot of debris



building near our base



WHAT'S ?

記念日症候群

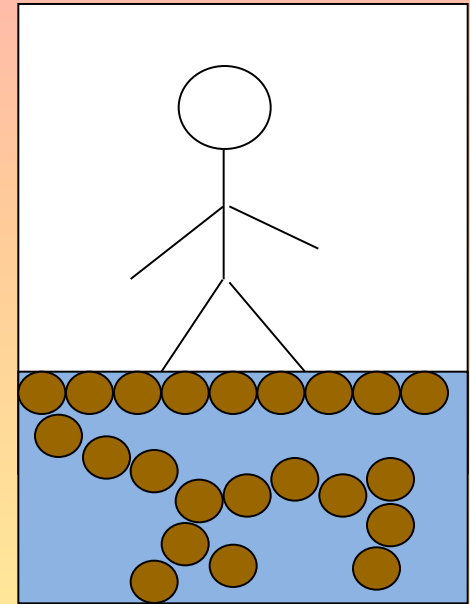
**this is a new term
used by the local
people,so**

I can't quite explain it

Liquefaction

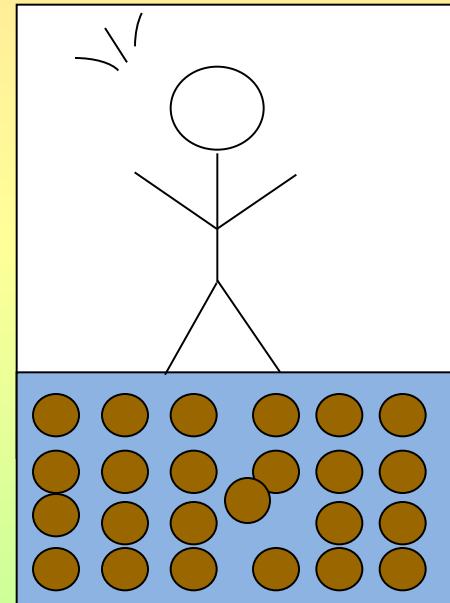
What's liquefaction

Grains of sands are fixed close together on the surface, and water is filled among the grains under the ground.



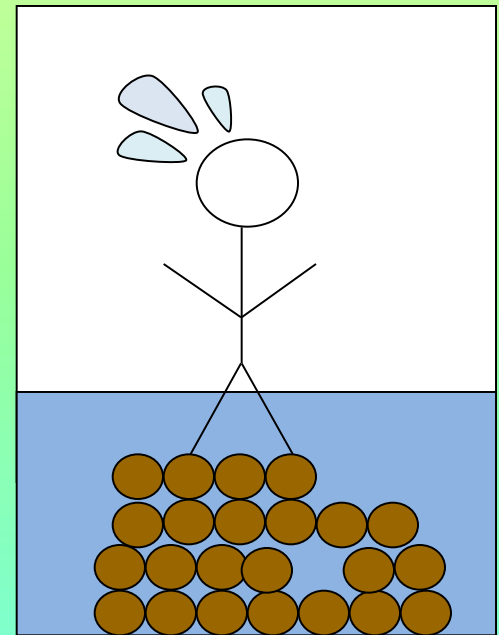
What's liquefaction

However, when the ground is shaken intensely by an earthquake, each grains on the surface gets apart and floats in the water.



What's liquefaction

**Then heavy sands
sink and water
sink water comes
out.**



Look at this picture



Look at this picture



And look at this picture



Other damages

Sewer destruction

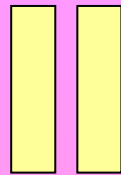
Economy

→ the value of land got lower

Amount of damage

total damage amount in Japan

➔ 169000000000000 **yen**



1,926,600,000,000,000Rp

Most important thing



To know about the liquefaction

But...

**Is development which breaks
environment sure enough
good?**

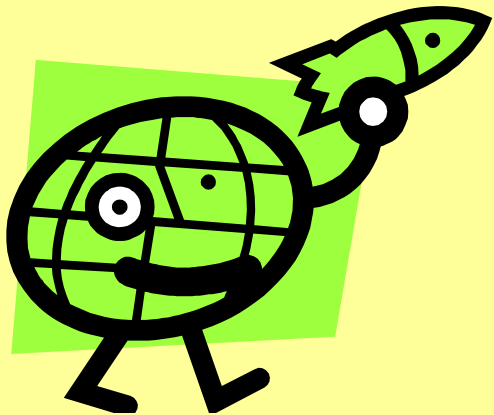
“There are 10,000 people who are interested in the volunteer work.”

“There are 100 people who do volunteer work.”

“There is only 1 that continues the volunteer work.”

**"The time marches
on, but there is no
recovery"**

**Let's work
together to
change the
world!**



Thank you for listening!

TEAM 東日本大震災

Manami Otani

Nanami Ito